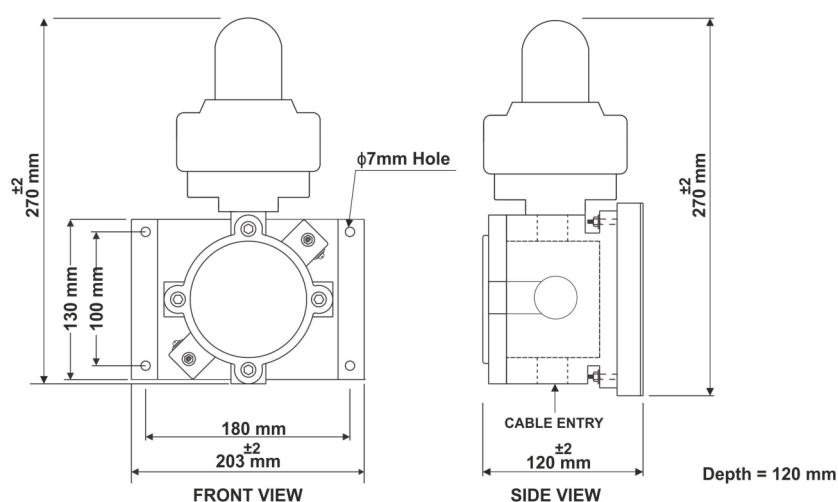
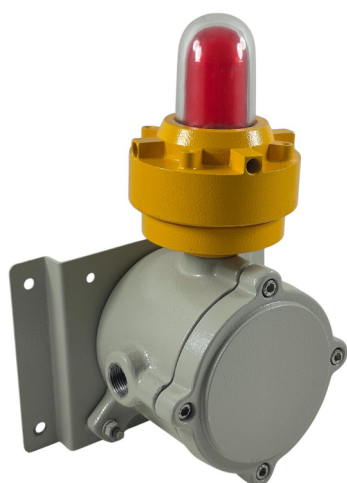


# Flameproof LED Flasher



	SALIENT FEATURES
Aux. Supply options	230 VAC / 110VAC or 24VDC (select any one)
Current Consumption	25 mA max for 24VDC & 25 mA max for 230VAC / 110VAC
Operating Temp.	Up to 55°C
Humidity	90% at 40°C
Enclosure	LM 6, Aluminum
Coating	Powder coated
Dimension	As per drawing
Applications	Hazardous area
Gas group	IIA, IIB & IIC, Zone 1 & Zone 2
Weight	6 Kg Max
Terminals	Up to 2.5 Sqmm
Cable Entry options	M20 OR 3/4" NPT OR 1/2" NPT (select Any One)
Mounting	Wall mounting / slab mounting type
Flasher	LED
Frequency	60 Flashes per minute
Hardware	SS
Flasher colour	Red, Green, Amber, Blue or White

## Flameproof Instrumentation

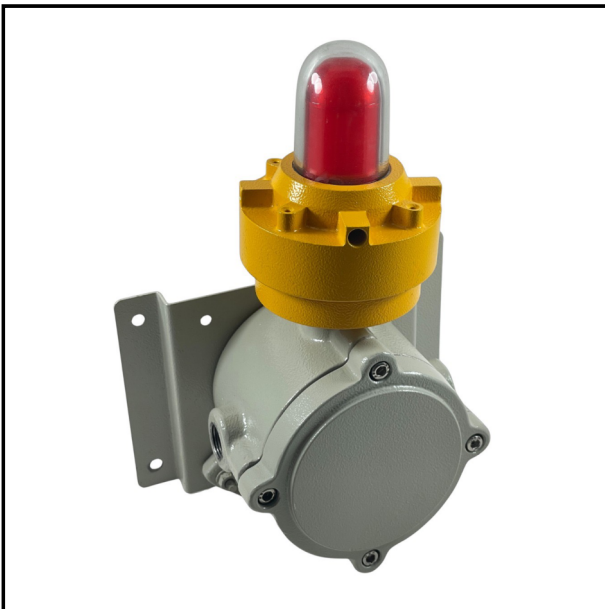
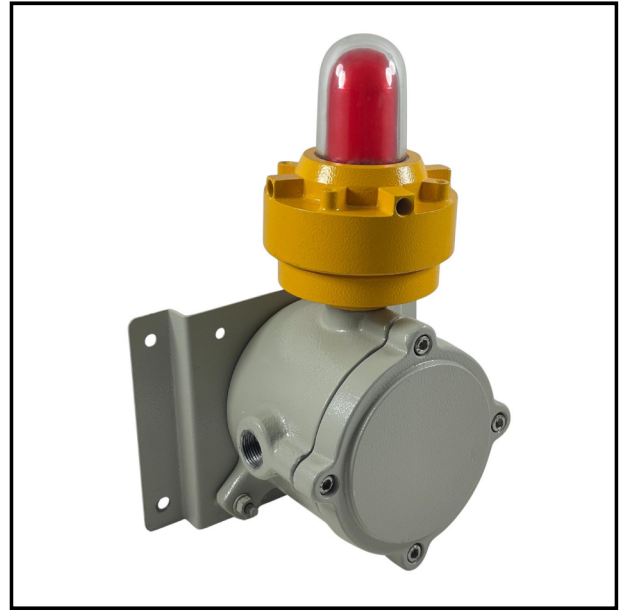
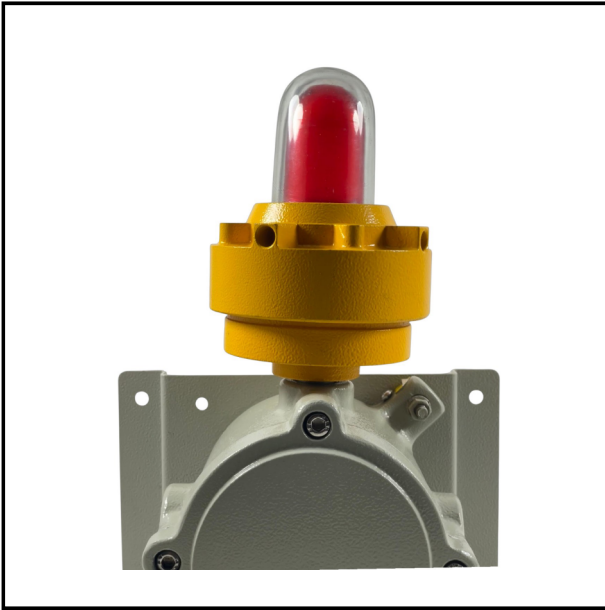
Plot. No. E/14, Addl. MIDC, Anand Nagar, Ambarnath (E), Dist. Thane, Maharashtra, India — 421 506.,

sales@flameproof.co.in

9321160178

www.flameproof.co.in

# Product Photos



**Flameproof Instrumentation**

Made in



**Flameproof Instrumentation**

Plot. No. E/14, Addl. MIDC, Anand Nagar, Ambarnath (E), Dist. Thane, Maharashtra, India — 421 506.,

✉ [sales@flameproof.co.in](mailto:sales@flameproof.co.in)

☎ 9321160178

🌐 [www.flameproof.co.in](http://www.flameproof.co.in)